

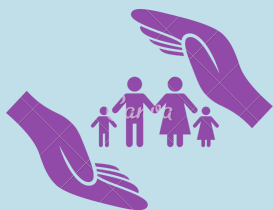


## POSITIVE BEHAVIOUR SUPPORT



### VALUES LED

PBS supports human rights and promotes respect, dignity, inclusion and a life without unnecessary restriction. PBS means treating people equally and working in partnership with the person and their family to make things better for everyone.



### PROMOTING QUALITY OF LIFE

The overall aim of PBS is to improve the quality of a person's life and that of the people around them. This includes children, young people and adults, as well as older people. PBS provides the right support at the right time for a person so they can lead a meaningful and interesting life participating in activities and learn new skills.



### UNDERSTANDING BEHAVIOUR AND MEETING NEEDS

PBS uses different methods to gather information to work out what people's behaviour means. It improves support and empowers people to use better and less harmful ways to get their needs met. This often involved using a range of different approaches that enhance a person's life.



### MAKING SYSTEMS WORK FOR THE PERSON

Giving the right support at the right time so people can thrive and fulfil their potential. This may mean changing the way the person is supported. Carers and staff may need training, and service structures and cultures may need to change. Continuous review is important to make sure support carries on working well for the person and those around them.